

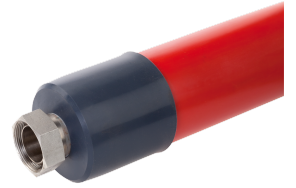
PRODUCT DATA SHEET

Standing: 2024-03-22

Metal tube M38X300 S M38x1.5 to M38x1.5
 DN 25, length 3000 mm; -100...350 °C
 Part Number: LZM 096

Features

- Corrugated metal hose for temperature control with different heat transfer liquids
- Multilayer insulation, suitable for wide temperature ranges
- Marking of the hose with permissible temperature range and maximum operating pressure



Technical Features

| | |
|-----------------------------|---|
| Operating temperature range | -100 ... 350 °C |
| Hydraulic connection 1 | M38 x 1,5 |
| Hydraulic connection 2 | M38 x 1,5 |
| Length | 300 cm |
| Inner diameters | 25 mm |
| Outer diameter | 78 mm |
| Material inside | Stainless steel |
| Material outside | Smooth silicone hose with silicone end caps |
| Vacuum resistance | 100 % for 0 to 50 °C |
| Classification | UL 94 HB |

Reserve technical changes

LAUDA DR. R. WOBSEY GMBH & CO. KG
 Laudaplatz 1 • 97922 Lauda-Königshofen • DE

T + 49 (0) 9343 503-0
 info@lauda.de • www.lauda.de
 WEEE-Reg.-Nr.: DE 66 42 40 57

Kommanditgesellschaft: Sitz Lauda-Königshofen
 Registergericht Mannheim • HRA 560069

Persönlich haftende Gesellschafterin:
 LAUDA DR. R. WOBSEY Verwaltungs-GmbH
 Sitz Lauda-Königshofen
 Registergericht Mannheim • HRB 560226

Geschäftsführer:
 Dr. Gunther Wobser (Vors.), Dr. Mario Englert,
 Dr. Ralf Hermann, Dr. Marc Stricker
 Beirat: Dr. Gerhard Wobser