

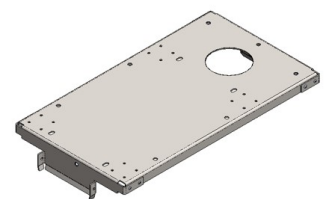
## PRODUCT DATA SHEET

Published: 2026-06-29

Carrier system for FC 80 MID / FC 80 C  
 flow control on Integral IN 2040 XTW  
 Part Number: LWZ 145

### Features

- Support plate for mounting LAUDA flow regulators such as FC 80 MID or FC 80 C after removing their rollers
- Threaded eyelets for the support plate for lifting the flow regulator onto the Integral, e.g. with a traverse
- Opening to the filler neck of the process thermostat
- Suitable for devices with housing size such as IN 2040 XTW



### Technical Features

Material	Stainless steel
Weight	8.90 kg

Reserve technical changes

LAUDA DR. R. WOBSEY GMBH & CO. KG  
 Laudaplatz 1 • 97922 Lauda-Königshofen • DE

T + 49 (0) 9343 503-0  
 info@lauda.de • www.lauda.de  
 WEEE-Reg-Nr.: DE 66 42 40 57

Kommanditgesellschaft: Sitz Lauda-Königshofen  
 Registergericht Mannheim • HRA 560069

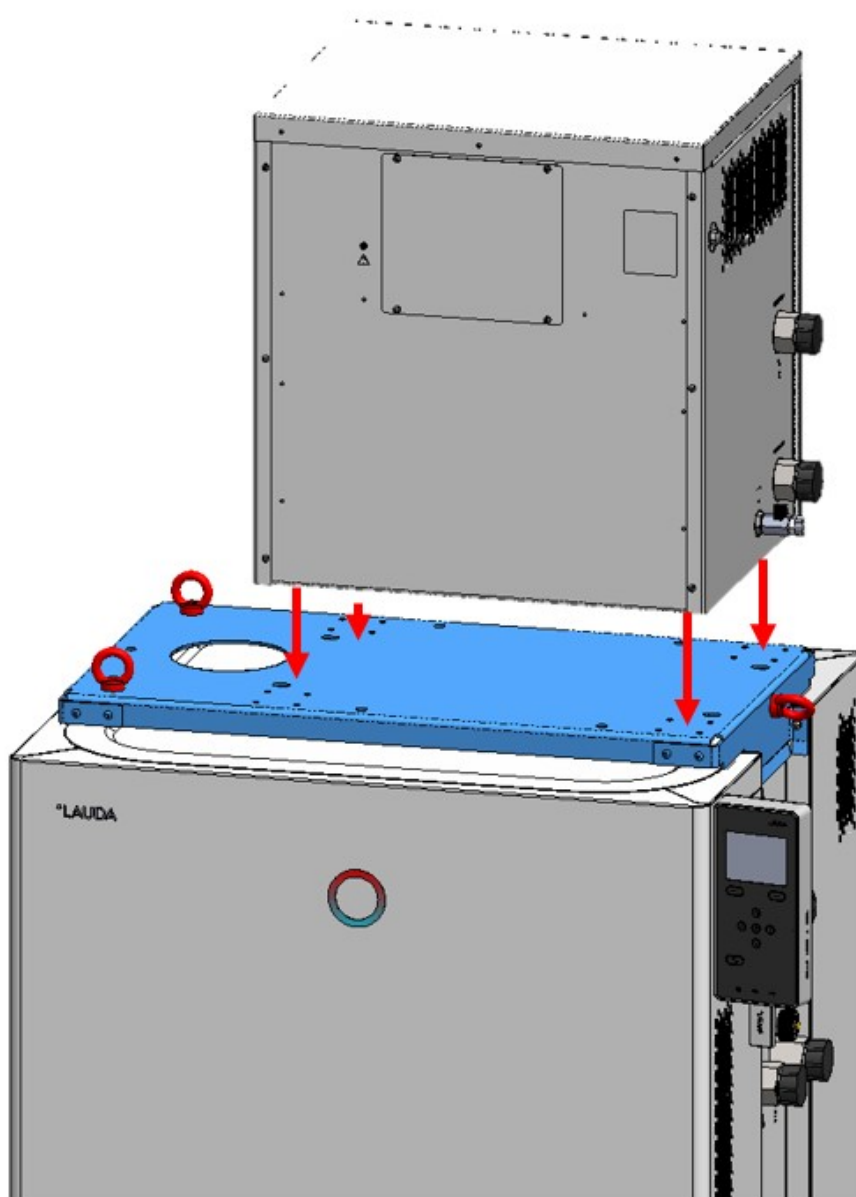
Persönlich haftende Gesellschafterin:  
 LAUDA DR. R. WOBSEY Verwaltungs-GmbH  
 Sitz Lauda-Königshofen  
 Registergericht Mannheim • HRB 560226

Geschäftsführer:  
 Dr. Gunther Wobser (Vors.), Dr. Mario Englert,  
 Dr. Marc Stricker  
 Beirat: Dr. Gerhard Wobser

## PRODUCT DATA SHEET

Published: 2026-06-29

Carrier system for FC 80 MID / FC 80 C  
flow control on Integral IN 2040 XTW  
Part Number: LWZ 145



Reserve technical changes

LAUDA DR. R. WOBSEY GMBH & CO. KG  
Laudaplatz 1 • 97922 Lauda-Königshofen • DE

T + 49 (0) 9343 503-0  
info@lauda.de • www.lauda.de  
WEEE-Reg-Nr.: DE 66 42 40 57

Kommanditgesellschaft: Sitz Lauda-Königshofen  
Registergericht Mannheim • HRA 560069

Persönlich haftende Gesellschafterin:  
LAUDA DR. R. WOBSEY Verwaltungs-GmbH  
Sitz Lauda-Königshofen  
Registergericht Mannheim • HRB 560226

Geschäftsführer:  
Dr. Gunther Wobser (Vors.), Dr. Mario Englert,  
Dr. Marc Stricker  
Beirat: Dr. Gerhard Wobser