

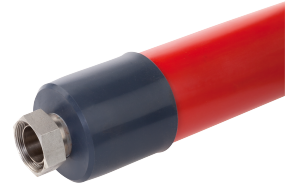
PRODUCT DATA SHEET

Standing: 2023-03-13

Metal tube M30X200 S M30x1.5 to M30x1.5
 DN 20, length 2000 mm; -100...350 °C
 Part Number: LZM 092

Features

- Corrugated metal hose for temperature control with different heat transfer liquids
- Multilayer insulation, suitable for wide temperature ranges
- Marking of the hose with permissible temperature range and maximum operating pressure



Technical Features

Operating temperature range	-100 ... 350 °C
Hydraulic connection 1	M30 x 1,5
Hydraulic connection 2	M30 x 1,5
Material inside	Stainless steel
Material outside	Smooth silicone hose with silicone end caps
Vacuum resistance	100 % for 0 to 50 °C
Classification	UL 94 HB

Reserve technical changes

LAUDA DR. R. WOBSEY GMBH & CO. KG
 Laudaplatz 1 • 97922 Lauda-Königshofen • DE

T + 49 (0) 9343 503-0 • F + 49 (0) 9343 503-222
 info@lauda.de • www.lauda.de
 WEEE-Reg.-Nr.: DE 66 42 40 57

Kommanditgesellschaft: Sitz Lauda-Königshofen
 Registergericht Mannheim • HRA 560069

Persönlich haftende Gesellschafterin:
 LAUDA DR. R. WOBSEY Verwaltungs-GmbH
 Sitz Lauda-Königshofen
 Registergericht Mannheim • HRB 560226

Geschäftsführer:
 Dr. Gunther Wobser (Vors.), Dr. Mario Englert,
 Dr. Ralf Hermann, Dr. Marc Stricker
 Beirat: Dr. Gerhard Wobser