

PRODUCT DATA SHEET

Standing: 2022-08-05

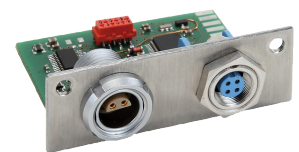
Pt 100/LiBus module

small aperture

Part Number: LRZ 918

Features

- Interface for connection of Pt-100 temperature sensors and device-compatible LiBus accessories
- Compatible with current LAUDA temperature control units that have a small, free module slot
- Software update via temperature control unit possible
- Scope of functions depending on the temperature control unit
- Mounting plate small
- Suitable connector for Pt-100 connection, LEMO, 1S Series, 4-pin, EQS 022 (not included)



Reserve technical changes

LAUDA DR. R. WOBSEY GMBH & CO. KG
Laudaplatz 1 • 97922 Lauda-Königshofen • DE

T + 49 (0) 9343 503-0 • F + 49 (0) 9343 503-222
info@lauda.de • www.lauda.de
WEEE-Reg.-Nr.: DE 66 42 40 57

Kommanditgesellschaft: Sitz Lauda-Königshofen
Registergericht Mannheim • HRA 560069

Persönlich haftende Gesellschafterin:
LAUDA DR. R. WOBSEY Verwaltungs-GmbH
Sitz Lauda-Königshofen
Registergericht Mannheim • HRB 560226

Geschäftsführer:
Dr. Gunther Wobser (Vors.), Dr. Mario Englert,
Dr. Ralf Hermann, Dr. Marc Stricker
Beirat: Dr. Gerhard Wobser